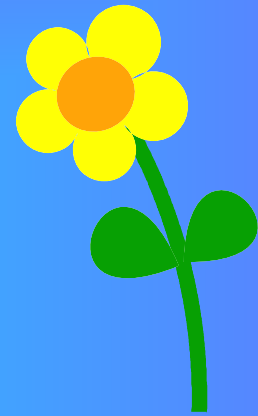


Maul Publisher

Version 3



***From photo albums
to vector graphics
and much more!***

Just a Desktop Publisher?

- ♪ Maul Publisher is designed to create any printed page that you can imagine.
- ♪ This means that it contains a number of features that can solve many of your daily requirements for which a dedicated solution is not available, or not sufficient.
- ♪ Further, because Maul is a desktop publisher, you can combine a wide-ranging set of solutions.
- ♪ So, a photo album can also be labelled, nice backgrounds and image effects can be added, and so on.

What you need to know

- ♪ You must have a printer driver installed in order for Maul to work. This application is designed to be accurate to ~ 1 printer pixel, which is much more precise than you may be used to.
- ♪ Maul is a modular frame based desktop publisher. You need to think in terms of structured graphical objects in order to understand what is going on.
- ♪ To get the best out of Maul requires practice. There are often a number of solutions available to solve a particular problem. The more you use it, the easier it is to find the right solution!

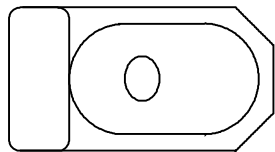
Vector Graphics I

- ♪ You can draw just about any shape using the frame handler.
- ♪ By using automatic frame styles, you can create instant flowcharts, diagrams, technical drawings and so on.
- ♪ You can add an image of an object to a page, and then draw modifications over the top.
- ♪ You can label items using vertical, horizontal, backwards, or even circular text. Arabic ^(right to left) and hieroglyphic ^(Japanese/Chinese) text symbols are also supported.

Vector Graphics II

- ♪ A series of line styles and arrow heads are provided to make it easy to indicate direction or size.
- ♪ The ruler bars can be both scaled and offset, so that you can draw to scale.
- ♪ Because of Maul's printing precision, you can reliably measure distances from the printout.
- ♪ Frame clipart, and the ability to group frames allows you to re-use objects throughout your drawing.

Some frame clipart

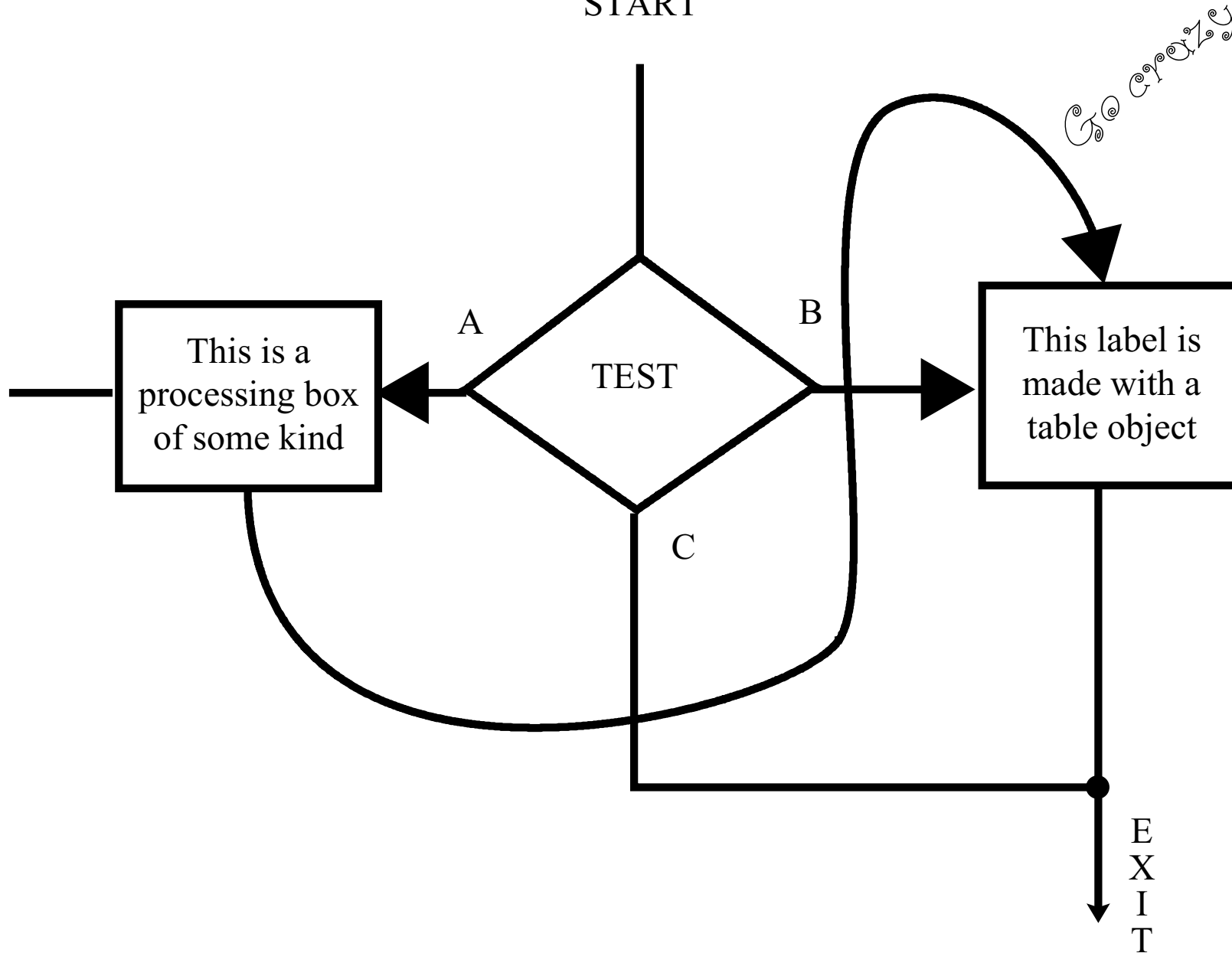


Graphics example I

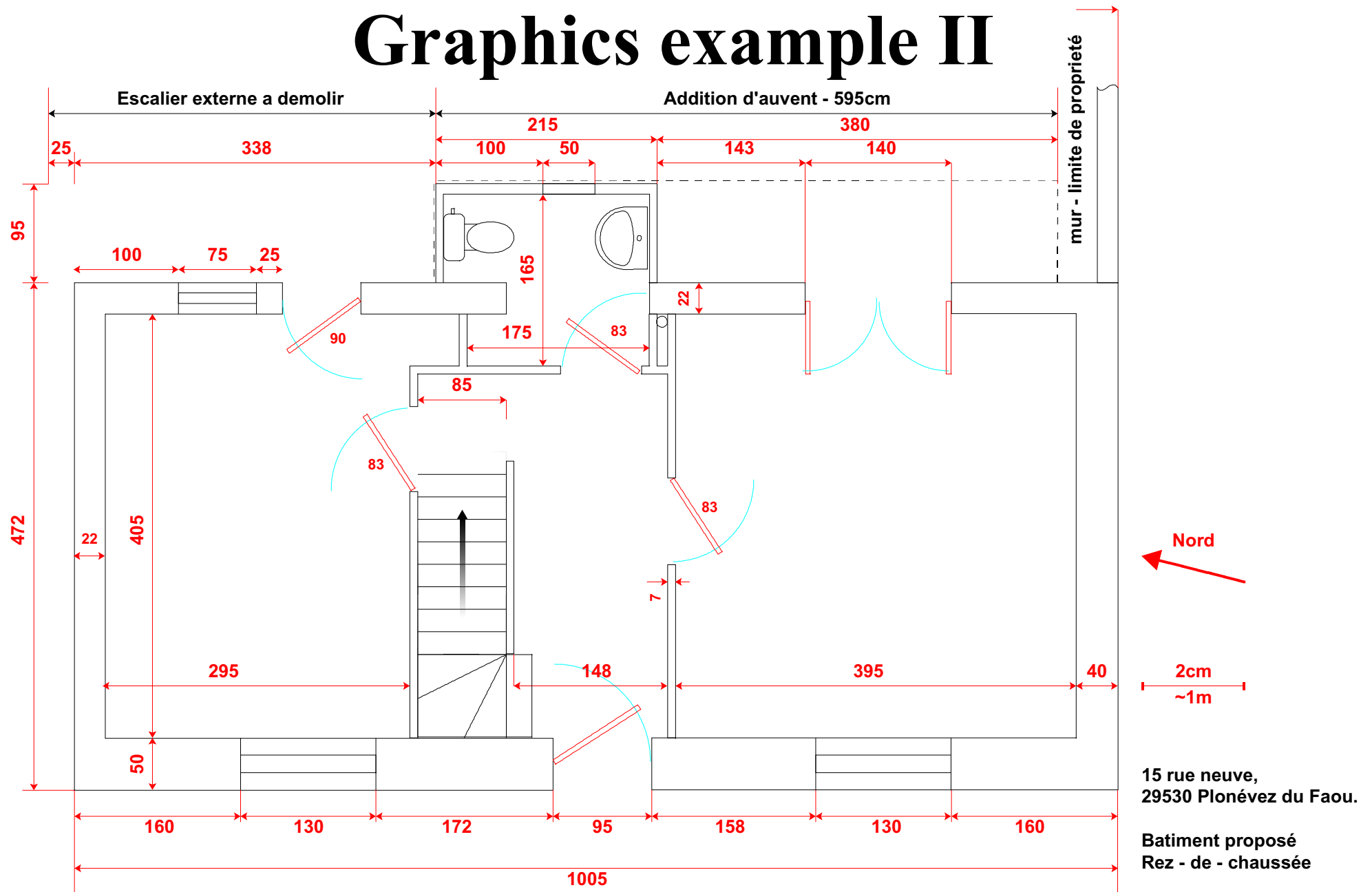
START

I
N
P
U
T

L
A
B
E
L



Graphics example II



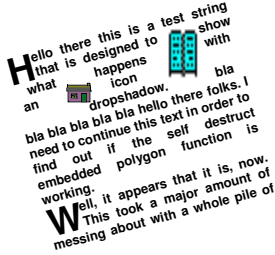
Text - 3 different kinds

- ♪ Maul provides 3 different ways to create text. As a text object in a frame, as text in a table object, and as text along a path.
- ♪ All three methods provide rich text, with a number of sophisticated features. Each method has its advantages and its limitations.
- ♪ All forms of text allow mail merge and spell checking, and the inclusion of inline images. Inline images can be simple bitmaps, metafiles, or even frame clipart.
- ♪ All text objects can recursively format.

Recursive text formatting

- ♪ Recursive text formatting means that text can contain a text object.
- ♪ As the text is reformatted, so the contained text is formatted too!

Recursive example

Hello there folks, this is a  wingstamped test string

More text features

- ♪ Just about everything in Maul can be rotated.
- ♪ Rectangle frames are deliberately excluded from this so that you can be sure that at least some things remain square!
- ♪ Rectangle frames can be converted to figures, whereupon you can rotate, shear, and modify them in a large number of ways.
- ♪ Maul contains a true freeform text formatter, able to format text into literally any shape, at any angle. This does require more processing power than a text editor.

Text example I

Convert the
'Invoice'
rectangle frame
into a figure,
and you can
rotate it!

Invoice			
Description	Unit Price	qty	Subtotal
Some object you just bought	45	1	45.00
38.79net	*16%VAT	= Total	€45.00

Notice that the
table uses
spreadsheet
equations to get
the job done.

Text example II

This test document is used to demonstrate Maul Publisher. Now in its third major release, this application solves a number of publishing and printing tasks. Whether you need to create a flow diagram, a picture album, a vector drawing, or even just a CD label, Maul does it all.

Maul Publisher contains a series of very sophisticated modules working together to provide the seamless integration of text and graphics. A hierarchical design is used to provide the best possible control of each factor used to print the final document. In fact, Maul bases all its calculations upon the resolution of the final printed output. This makes it a tool that provides greater printing precision than just about any other OS/2 application. To improve this precision further, override files can be used to provide more accurate measurements of printer pages than are available to the operating system itself.

Beyond this basic precision, further control is available to manage page numbers in a variety of formats including folios bound into a codex. For those of you unfamiliar with bookbinding terms, a folio is a sheet of paper folded in half to form two sheets of a book, and a codex is made by stitching or stapling a set of folios together along their folds. The resulting pages require out of order page numbering, and Maul handles this with ease. You can thus easily produce bound multipage newsletters or magazines.

Because text is such an integral part of most printed pages, a text handler is provided that can produce formatted and kerned multifont text in any shape that you can draw, at any angle you want, and if any shape of object lies on top, the text can be formatted around it. This is all calculated

using trigonometric functions at printer resolution. The result is a superb quality of printed page, with far better layout precision than most word processors can manage. Text can be made to flow around the border of a shape too, so text along a curve, or have drawn, is readily achieved. The image processor provides an equally rich environment to manage bitmaps, with features such as image offlining to unique in a separate file from the main publication, a less detailed image is used to allow you to edit the page. When the resulting page is printed, the large original images are used, providing the best quality available. This feature and still keep the document editable. Some highlights of all of them were included right to left text such as Hebrew, and vertical text such as Kanji, checking and spell

Bitmaps

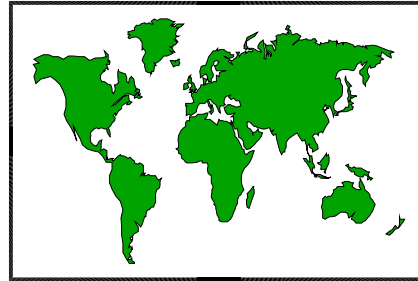
- ♪ Maul provides a large number of sophisticated bitmap features.
- ♪ You can use bitmaps in frames, and they can also be embedded in text strings, or be reused in anchors.
- ♪ Anything you draw in Maul can be exported as a bitmap (or as a metafile, or as a frame object).
- ♪ Bitmap import or export supports a wide range of formats, such as tif or jpg to name but two.
- ♪ Transparency is also supported for icons and maskmaps, and can be used for aligning text.

More bitmap features

- ♫ Bitmap offlining provides the means to put a large number of large bitmaps into the same document. On OS/2, this feature is unique to Maul Publisher.
- ♫ Precision bitmap scaling provides exceptional print quality when fine line details are present in the image.
- ♫ Bitmap transparency is now also supported on Postscript printers.
- ♫ Maul provides a series of additional tools to scale, rotate, and colour tune bitmap images. This makes Maul a powerful bitmap application in its own right.

Image examples I

Hello. This example shows text formatted around an image mask. This feature is extremely useful where text has to flow around a non-rectangular image area.



A metafile



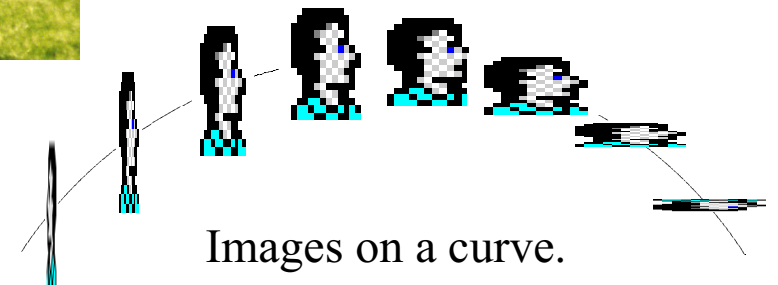
Icon on a shaded background



This example shows how image colour and brightness tuning can transform a gray and flat picture into a bright and sunny one.

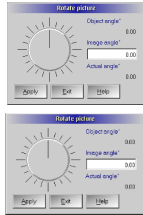


...Icon bullet point!



Images on a curve.

Image examples II



These two frames illustrate the improvement that smooth scaling can make to an image.

Zoom in to 1::1 to see the difference!



Fine line detailed offline image

This text frame illustrates the use of a frame anchor.

This way

The anchor is used to provide a symbolic link to another part of the publication, and requires almost no space in the file.

Use this whenever you need to include the same object many times, or when you need to include an offlined image in a block of text.

This way

Unlike a separate frame, the anchor moves with the text.

Spell checking and hyphenation

- ♫ Maul uses *libhnj* and *myspell*, as used by Open Office, to provide spell checking and hyphenation. This has the advantage that you can use the same dictionaries.
- ♫ You can set a different language and codepage for each text article, and Maul will spell check each article using the correct language.
- ♫ Codepage translation tables are used so that no matter which codepage you use, the text will be correctly hyphenated and spell checked.

Hyphenation and linebreaks

- ♪ You can use three types of hyphenation in a text article. Automatic hyphenation based upon a hyphenation wordlist, hard hyphenation (just add a - to a long word like this: - hyphen-ation) or soft hyphenation which is added using Alt- ('alt' and '-' keys pressed together). Soft hyphenation will only appear when it is needed to fit a line of text.
- ♪ The formatter makes several attempts to fit text, using spaces, hyphenation, and finally control characters such as ,:;.-+= etc. If it still doesn't fit, the text may disappear. In that case you may have to increase the width of the frame.

Mail merge

- ♪ You can load a comma separated list of data onto your document to provide a mail merge database. This feature is not restricted to mail, any data can be used. The first row of your data should contain labels to describe the data columns. These labels are then used to help you choose the required element.
- ♪ If you print multiple copies of the same document, the mailmerge print manager can be used to automatically increment through the database, producing an individualised document with each copy.

Assisted index extraction

- ♪ Maul provides an index extraction handler that can find and list occurrences of text in a publication. The index extraction handler can also add page numbers to the result. All you have to do is choose a suitable list of words to look for.
- ♪ For more advanced requirements, index items can also be found using boolean logic rules, such as *this + !that*, meaning *this and not that*. This allows for a much more concise index than would otherwise be the case.

Title marking

- ♪ By marking text strings as titles, you can easily extract a table of contents from your publication.
- ♪ Up to 8 title levels are available. This allows you to create subtitles within subtitles. An additional URL link level is available, but not used at present.
- ♪ When titles are extracted into a contents list, each title level can be formatted differently using text style sheets. By using a PDF tool such as ePDF, and the pdfmark subsystem handler, you can also extract a contents list for the Adobe® Acrobat® reader.

Drag and drop

- ♫ Maul provides a number of features to speed up the creation of a publication. If you create a frame, and then switch to an object layer, you can drag in, or paste, any of the recognised data types.
- ♫ Similarly, you can select a set of frames and drag them out as a metafile and into any compatible application.
- ♫ The operations that are possible depend on the current edit mode. This also applies to such items as TWAIN scanning, for example.

Colours and drag and drop

- ♫ Colour drag and drop is combined with named colour tables so that you can drag predefined colours anywhere in the publication, or in fact anywhere on the desktop.
- ♫ A colour table palette with a built in colour editor allows you to define and save a colour table within your publication.
- ♫ You can also automatically load a predefined table of colours when creating a new publication. This ensures that the same colours are always available.

Per project data storage

- ♪ Maul stores a number of diverse items such as clipart, style sheets and master pages in a common default folder.
- ♪ However, sometimes it is more convenient to store such data separately. This enables a working set of style sheets and masterpages to be stored with its publication.
- ♪ When creating very large documents, it can also be convenient to set up a project. This enables you to split the document into several files.

Error recovery

- ♫ Maul recognises and processes fatal errors in order to protect a publication. Maul can crash when it runs out of memory, for example.
- ♫ When a crash does occurs, the system will verify the integrity of the file data, and if possible will write that data to disk.
- ♫ An error log is used to describe what happened, and can be checked to find out if the file dump was successful. You should still try and regularly save your data!

The trial version

- ♫ Maul Publisher is released as shareware with a 30 day trial limitation. Trial printouts are watermarked after the first page.
- ♫ I am confident that once you have begun to fully explore the extensive features included with this application, you will not want to use OS/2 or eComStation without it.
- ♫ For further information, please see <http://www.manglais.com>, or contact me, the Author:-
Peter Koller <peter@manglais.com>